

**The Gables  
at  
Pelican Marsh  
975 Spanish Moss Trail**



[www.975SpanishMoss.com](http://www.975SpanishMoss.com)

Oversized lot 0.45 acres · 4 Bedroom, 3 Bath · 3,081 SF under AC  
5,905 total SF · Built 1996 · Totally renovated 2009

**Tom & Sue**  
Weidlich  
REALTORS®

**Waterfront**  
Realty Group, Inc.



## Living Area

- Napa Walnut 5" Distressed Hardwood Flooring in Kitchen, Dining and Family rooms
- New carpet in Bedrooms and Living Room
- Indoor/Outdoor Audio and Video surround sound system
- Large corner pocket doors to let in an abundance of natural light
- 2 Gas fireplaces
- Separate Living, Dining and Family rooms
- Furnishings Negotiable

---

## Kitchen and Breakfast Nook

- Chefs kitchen with new top of the line appliances
- 36" Wolf Gas cook top with 6 burners
- Organic White Caesar Stone countertops with 3" edge
- Glass Mosaic Backsplash
- Breakfast Nook with view of pool plus bar-style dining
- Enhanced lighting

# Master Suite and Bath

- French doors leading to pool area
- Cozy gas fireplace
- Lounge or work area
- Custom built center cabinet with lighting
- 18 x 18 white glass tiles on floor and walk-in shower
- Carrera Marble Vanity with 3" edge
- Free-Standing Bath Tub



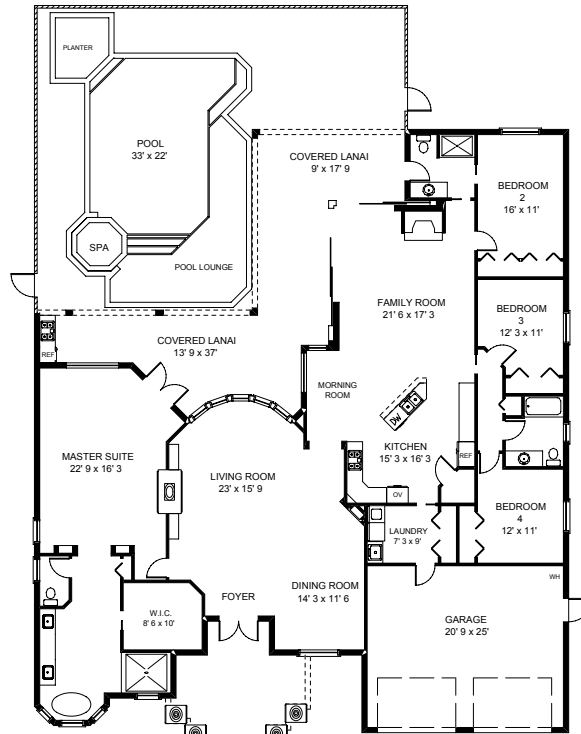
---

# Pool Area and Exterior

- Pool bath with powder blue ceramic tiles and white caeser stone vanity
- Heated pool and Spa
- Large custom sun shelf featuring Walker Zanger Glass Tiles
- 24x24 Jerusalem limestone decking and coping
- Built-in FireMagic Echelon gas grill and beverage fridge
- New exterior paint including trim and roof



975 SPANISH MOSS TRAIL  
NAPLES, FL



TOTAL UNDER AIR	3081 sq. ft.
Garage	564 sq. ft.
Covered Entry	210 sq. ft.
Covered Lanai	659 sq. ft.

TOTAL UNDER ROOF	4514 sq. ft.
Lanai/Pool	1391 sq. ft.

TOTAL AREA	5905 sq. ft.
------------	--------------

PRECISION FLOORPLANS, INC.  
www.precisionfloorplans.com  
239 - 598 - 9411

ALL INFORMATION IS DEEMED  
RELIABLE BUT NOT  
GUARANTEED

©2010 Precision Floorplans, Inc. All rights reserved. For permission to use or copy, please call (239) 598-9411

## Tom & Sue Weidlich, Realtors Waterfront Realty Group, Inc.



1300 3rd Street South, 302A · Naples, FL 34102  
Email: TomAndSue@KeyToParadiseNaples.com

**239-564-5692 · 239-290-8166**

[www.KeyToParadiseNaples.com](http://www.KeyToParadiseNaples.com)